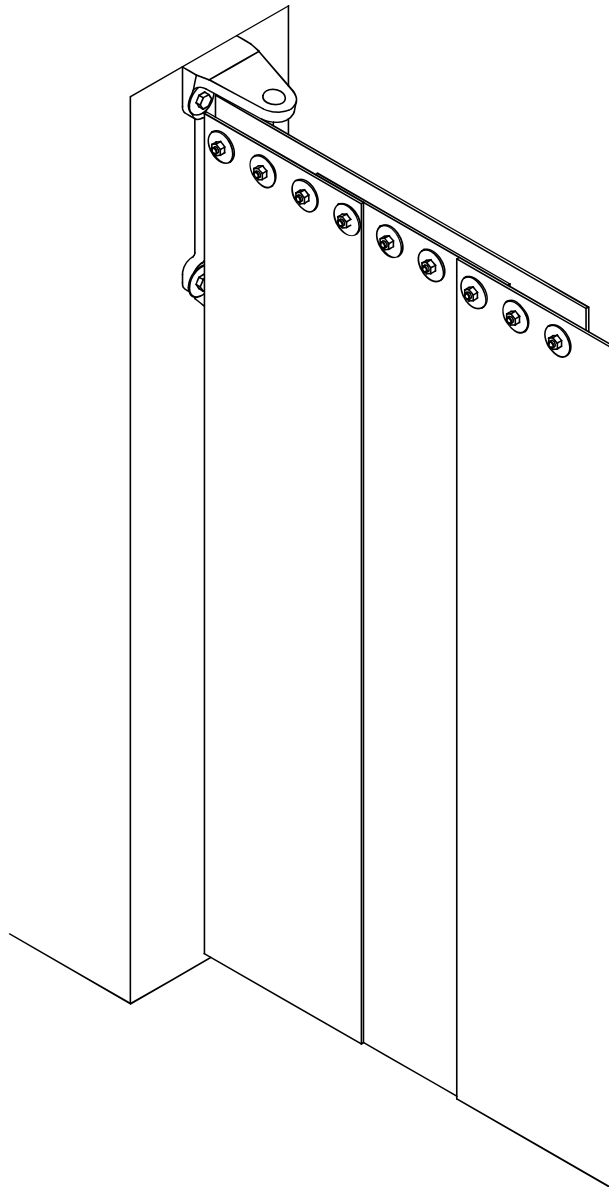


Series 9010-5 – Gravity Swing Arm Strip Curtain

INSTALLATION INSTRUCTIONS

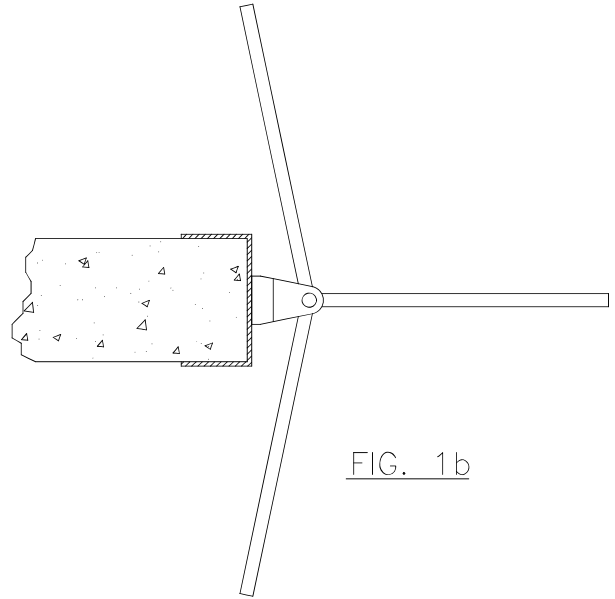
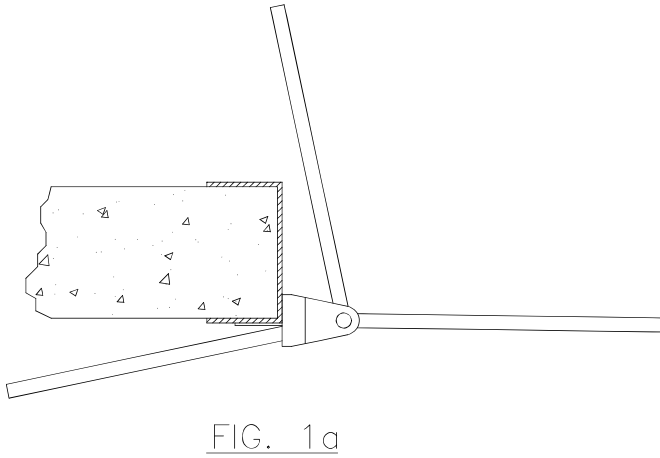
READ ALL INSTRUCTIONS BEFORE INSTALLING CURTAIN. SUPER SEAL MFG. LTD. WILL NOT BE HELD RESPONSIBLE FOR IMPROPER INSTALLATION OF ANCHORING DEVICES, OR FOR INSTALLATION INTO AGED OR UNSOUND CONCRETE, CONCRETE BLOCK, OR OTHER WALL OR FLOOR MATERIAL WHICH MAY RESULT IN PREMATURE PRODUCT WEAR, PRODUCT FAILURE, PROPERTY DAMAGE, OR PERSONAL INJURY.



Note: Before Installation see hardware list at back of this manual (page 7).

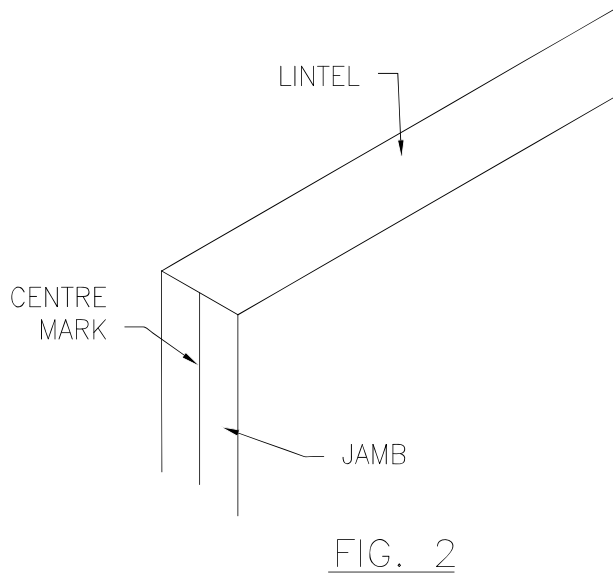
1. Determine Type of Swing Arm.

- a. For Standard Hinge Swing (Fig. 1a)
- b. For Wider Angle Hinge Swing (Fig. 1b)



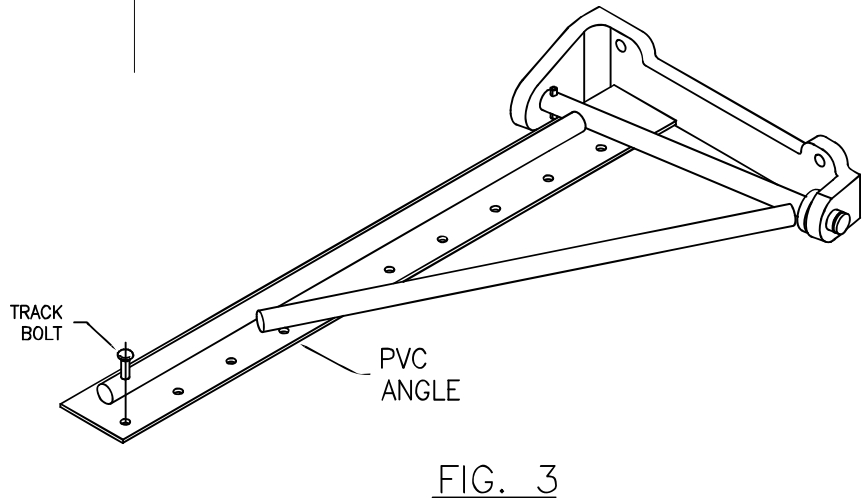
2. Mark Centre of Jamb (Top Corner) – For 90° Swing.

- o Mark center of jambs (Fig. 2), using level.



3. Prepare Swing Arm Assembly.

- a. Insert track bolts into flat bar (Fig. 3).



- b. Tape backside of flat bar to hold track bolts in place (Fig. 4).

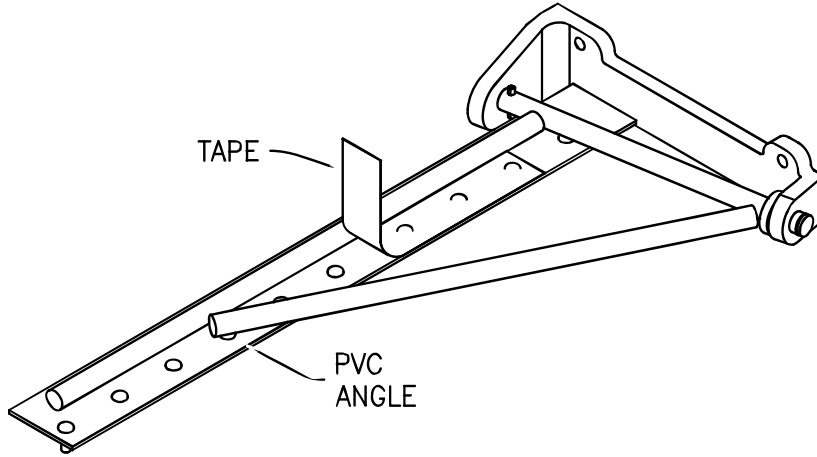


FIG. 4

4a. Attach Hinge Bracket Assembly To Door Frame (90° Swing).

- a. Place hinge bracket assembly onto jamb along centre line and flush to

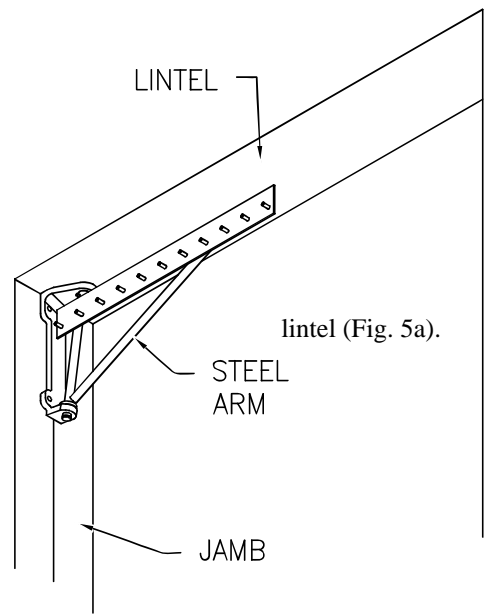


FIG. 5a

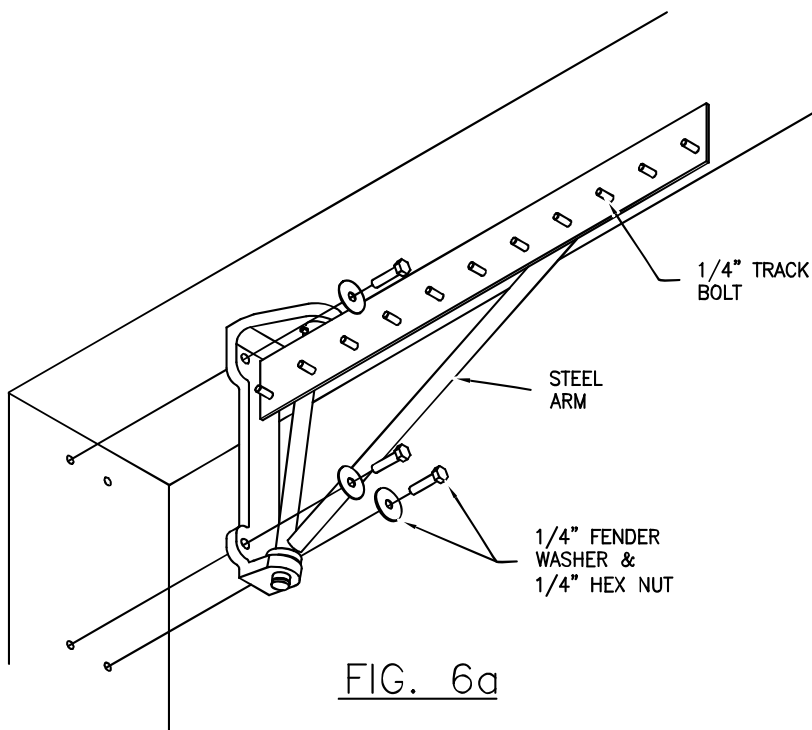


FIG. 6a

- b. Mark jamb, using holes in bracket. Remove bracket.
- c. Drill and tap for 5/16"-18unc thread. Use 17/64" drill bit.
- d. Attach hinge bracket assembly to jamb (Fig. 6a).
- e. For double swing arm, repeat step for other panel.

4b. Attach Hinge Bracket Assembly To Door Frame (270° Swing).

- a. Place hinge bracket assembly onto jamb along corner and flush to lintel (Fig. 5b).

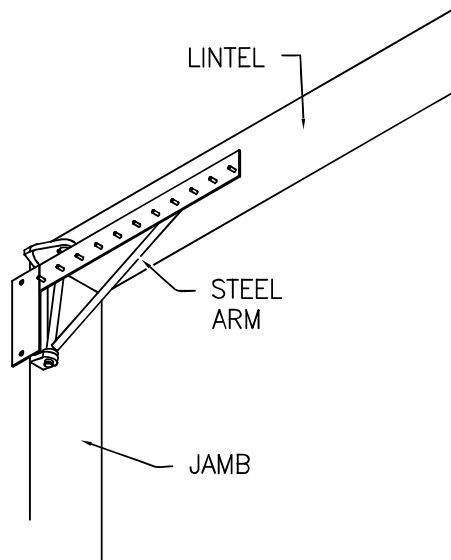


FIG. 5b

- b. Mark jamb, using holes in bracket. Remove bracket.
- c. Drill and tap for 5/16"-18unc thread. Use 17/64" drill bit.
- d. Attach hinge bracket assembly to jamb (Fig. 6b).
- e. For double swing arm, repeat step for other panel.

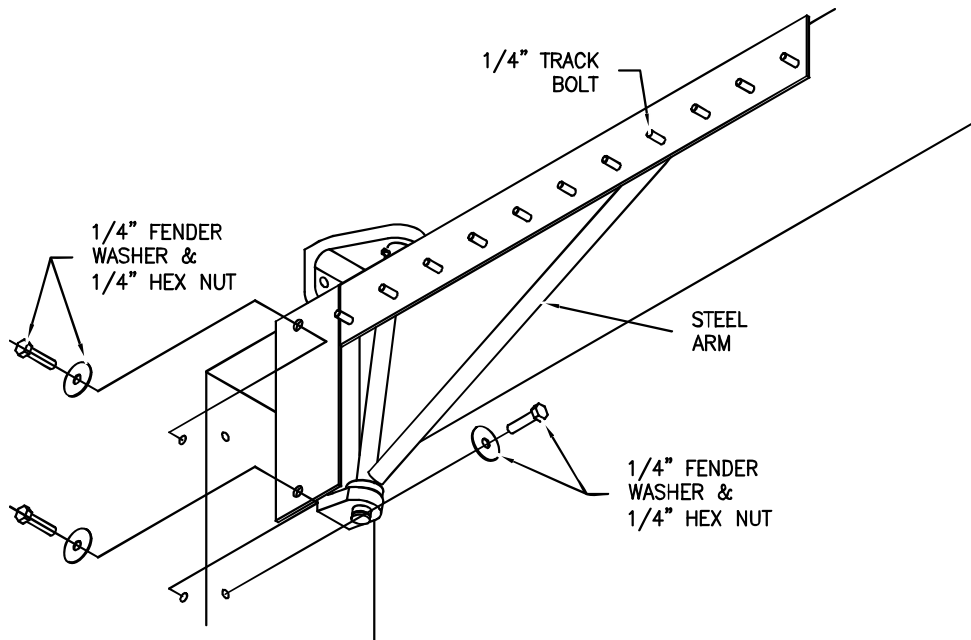


FIG. 6b

5. Attach PVC strips to swing arm

- a. Attach PVC strips to swing arm (Fig. 7).
- b. Secure PVC strips into position using 1/4" fender washers and 1/4" hex nuts, use 7/16" socket driver bit (Fig. 7).
- c. Lead edge PVC Strip

Note: Refer to Figs. A-D for proper PVC strip layout.

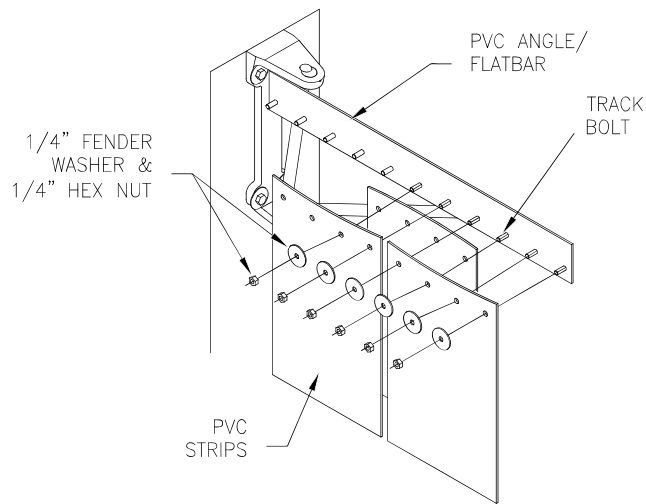


FIG. 7

6. Make Final Door Adjustments

- a. For double swing arm assemblies, test both sides together.
- b. Allow both swing arm assemblies to swing fully in both directions.
- c. If swing arm assemblies do not close in line, loosen bolts of hinge bracket assembly (Fig. 8).
 - i. Slide bottom of hinge bracket left or right to correct alignment.
 - ii. Repeat and tighten until panel swings and hangs properly.

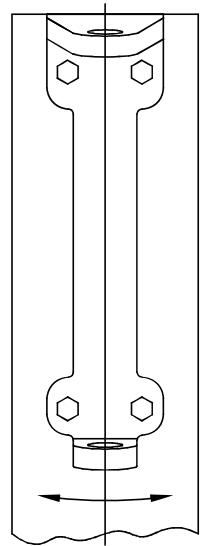
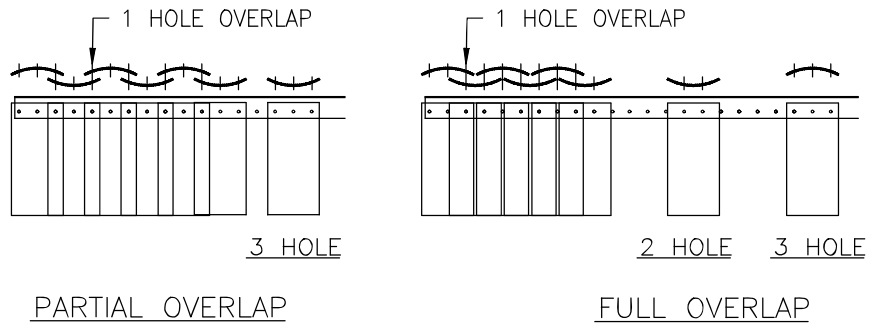
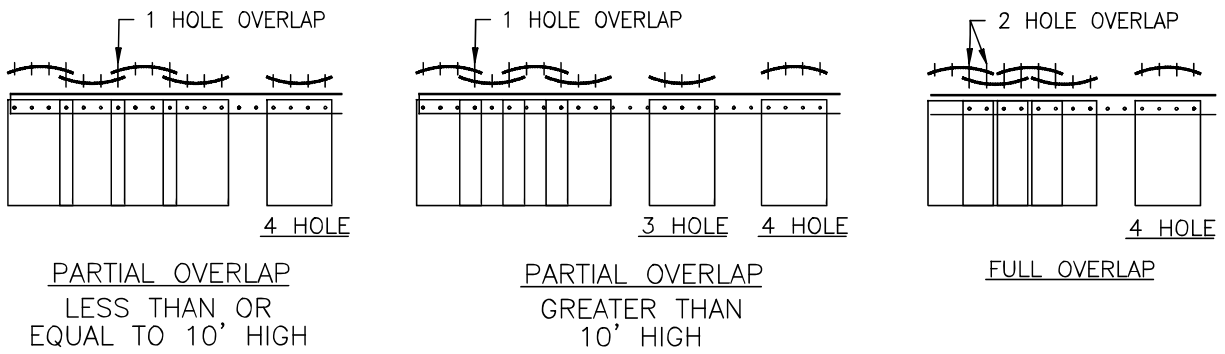


FIG. 8

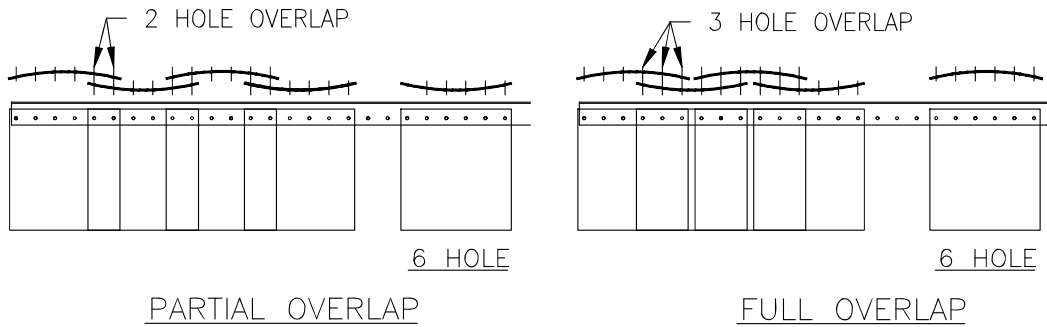
Note: Refer to Figs. A-D for proper PVC strip layout.



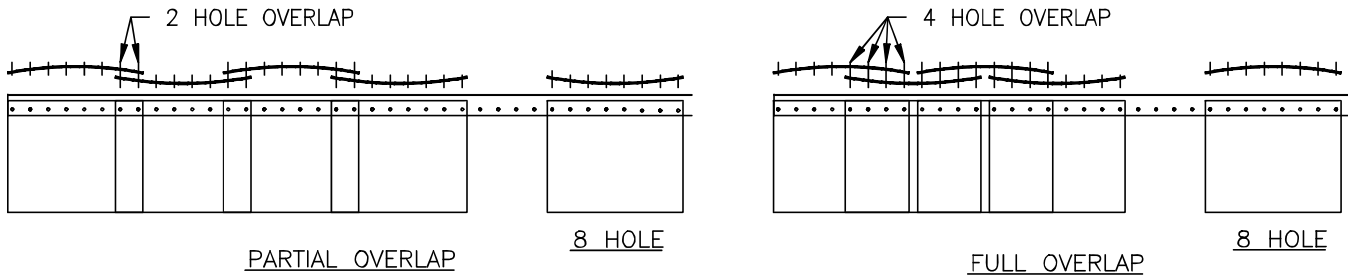
6" STRIPS
FIG. A



8" STRIPS
FIG. B



12" STRIPS
FIG. C



16" STRIPS

FIG. D

The Following Lists Cover Basic Installation, Not Including Options.

Components List (Per Single Assembly)

No.	Description	Qty.
1	Hinge Bracket/Arm Assembly	1
2	PVC Strips	*

*Quantities dependent on customer specifications

Hardware List (Per Single Assembly)

No.	Description	Qty.
1	1/4" (20) Hex Nut-Zinc	*
2	1/4" B.S. Fender Washer-Zinc	*
3	1/4" (20) X3/4" Track Bolt-Zinc	*
4	3/8" B.S. Plate Washer-Zinc	*
5	3/16" Spring Pin-Bare	1
6	5/16" (18) X1 1/4" Hex Bolt-Zinc	8

*Quantities dependent on customer specifications

Recommended Tools

No.	Description	Qty.
1	Tape Measure	1
2	Plumb line or Level	1
3	Pencil or Marker	1
4	Square	1
5	Power Drill	1
6	17/64" Drill Bit	1
9	1/2" Socket Driver Bit	1
10	7/16" Socket Driver Bit	1